

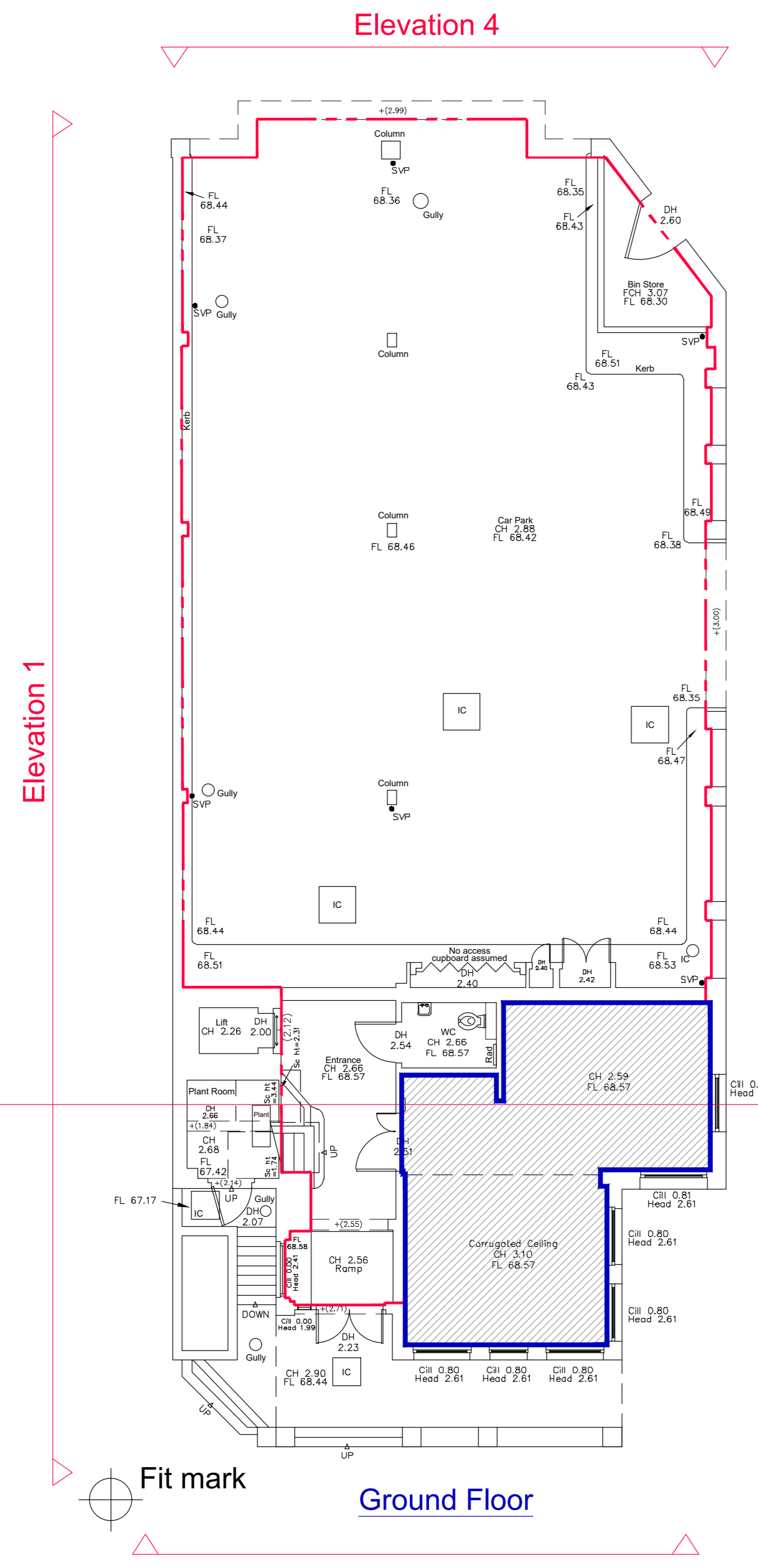
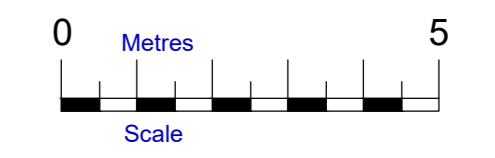
DO NOT SCALE

All critical dimensions must be checked on site prior to commencement of any works.
 This is a CAD drawing - some layers may not be shown on this drawing

Hook Survey Legend

- DI 2.10 Door head height
- FL 66.62 Floor level
- CH 2.71 Ceiling height (from floor)
- FD 2.55 False Ceiling height (from floor)
- CH 1.05 Window cill height (from floor)
- WH 2.50 Window head height (from floor)
- SL H+4.05 Height at change in ceiling slope
- RAD Radiator
- (0.75) Beam soffit height (from floor)

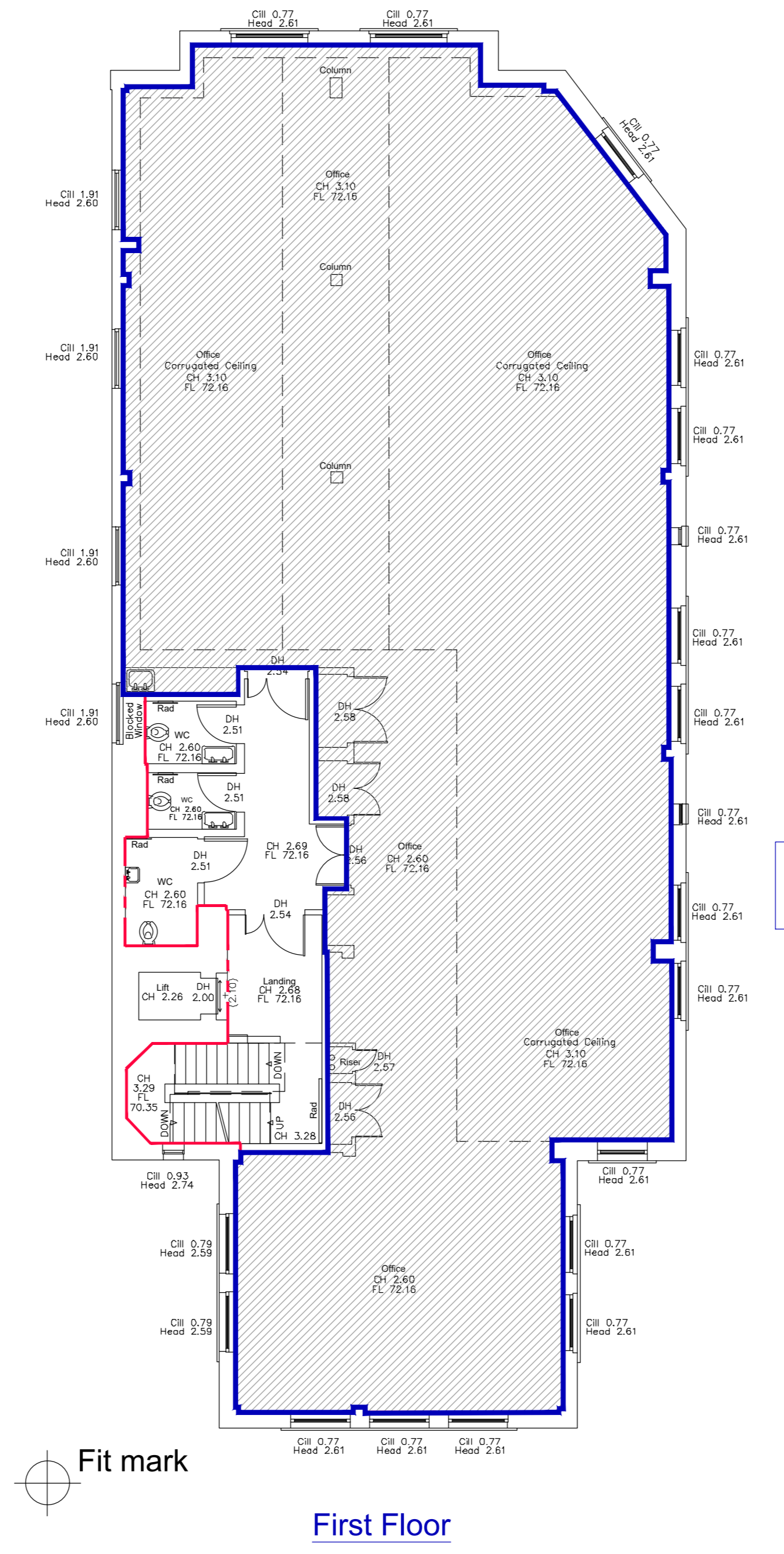
Notes
 Beams and columns surveyed where accessible - some beams and columns may not be shown.
 Elevation details surveyed where accessible.
 All measurements have been taken to existing wall, floor and ceiling finishes.



Ground Floor

GIA = 316.34 m²

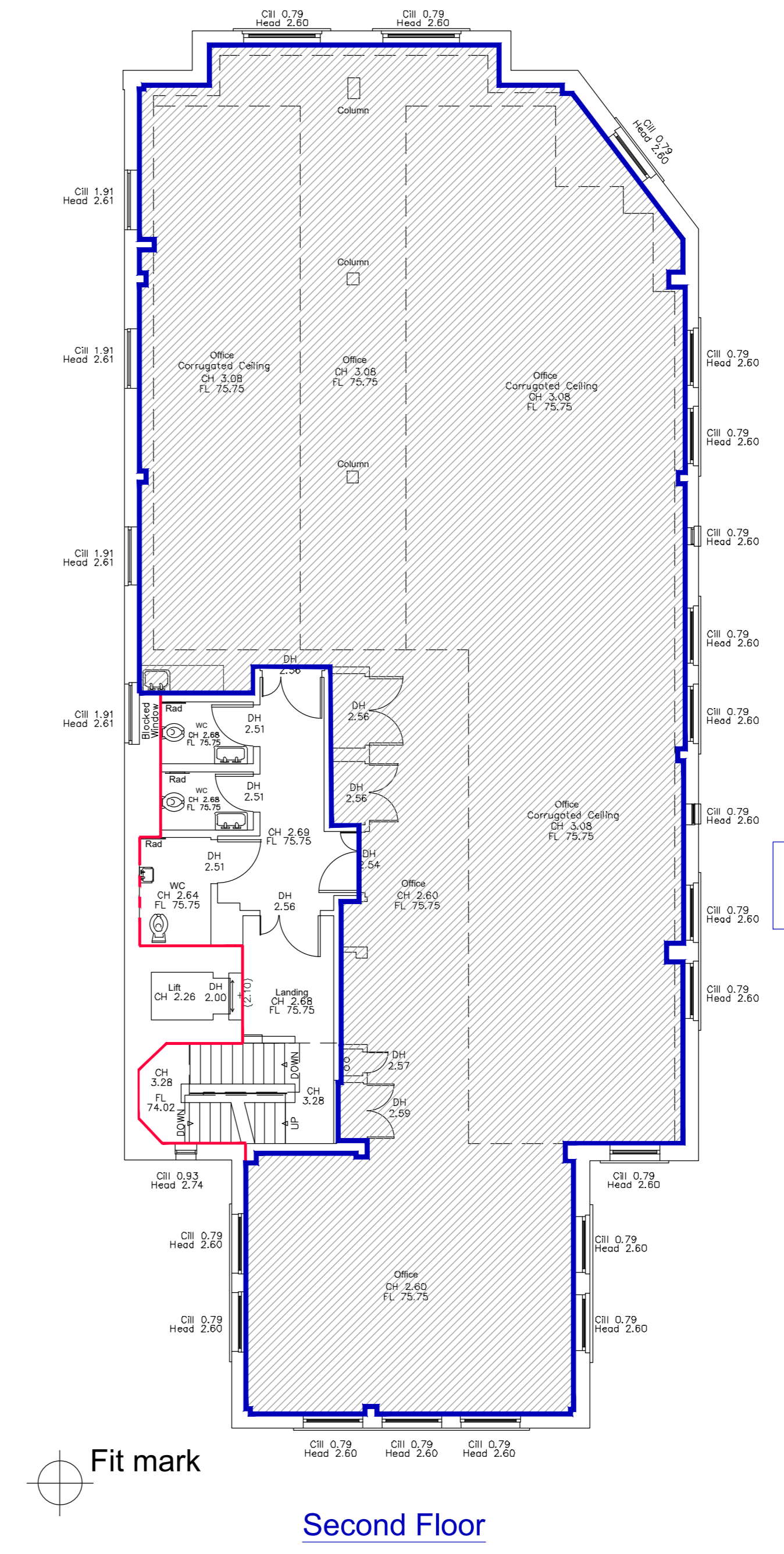
NIA = 44.10 m²



First Floor

GIA = 336.52 m²

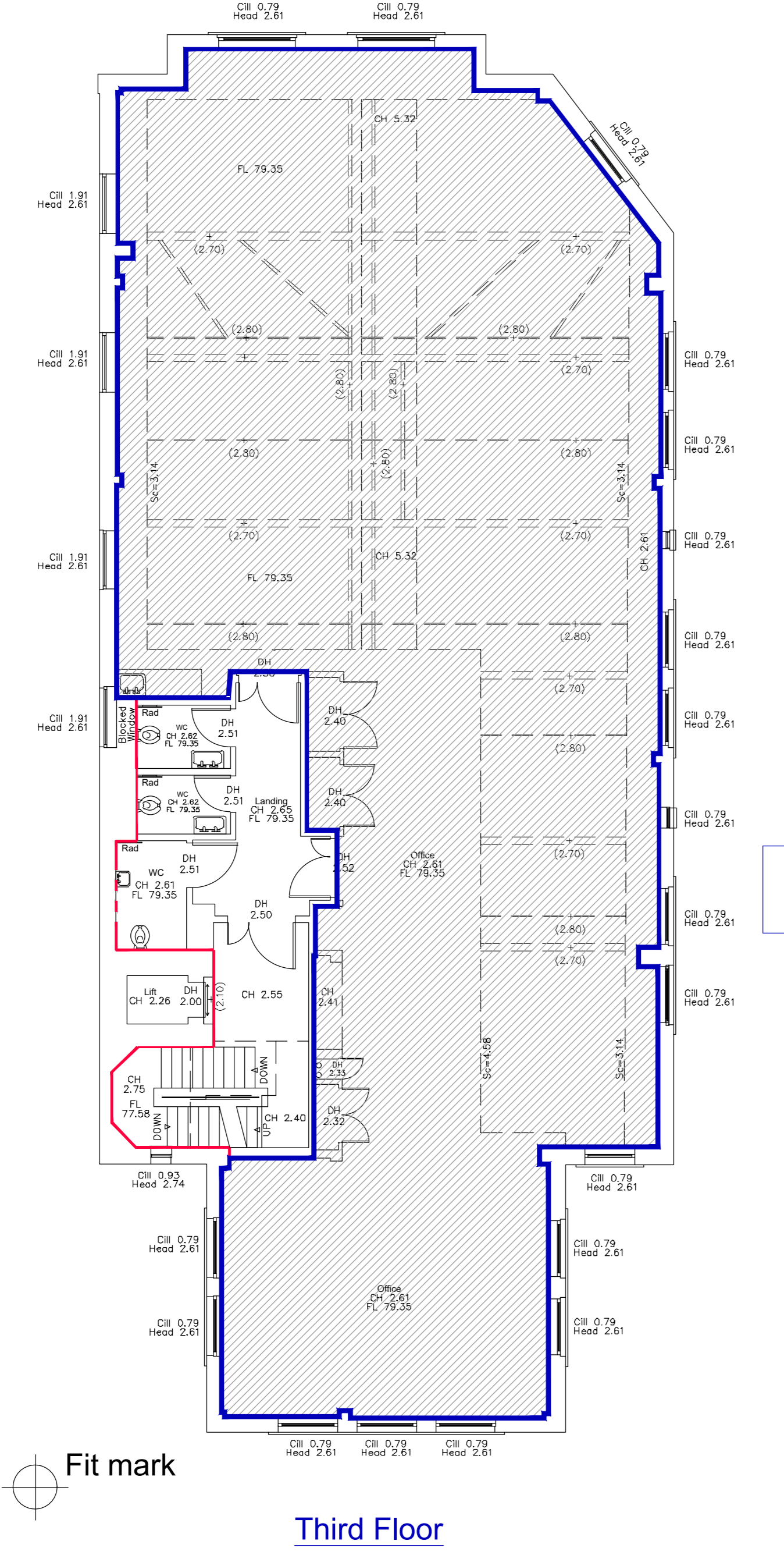
NIA = 295.94 m²



Second Floor

GIA = 337.26 m²

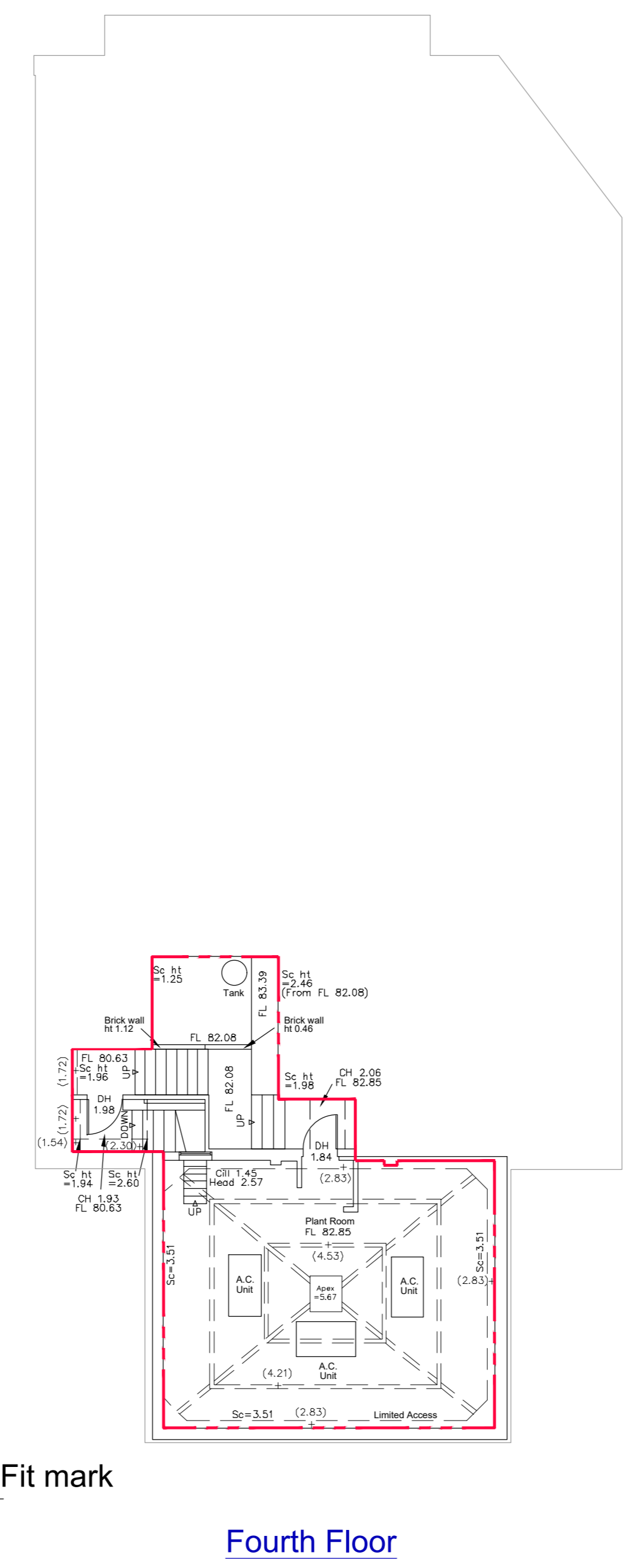
NIA = 295.69 m²



Third Floor

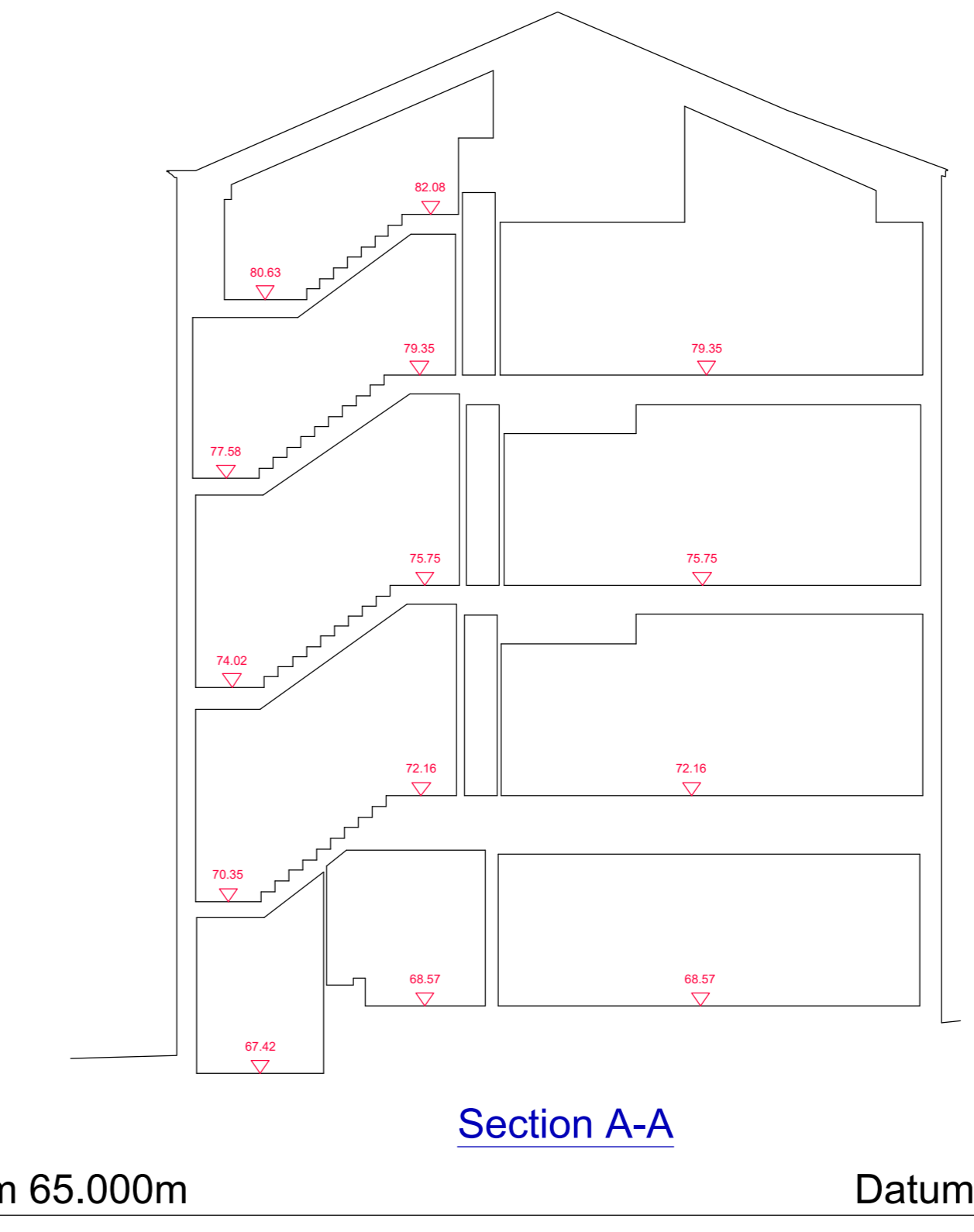
GIA = 336.22 m²

NIA = 294.81 m²



Fourth Floor

GIA = 62.95 m²



Section A-A

Revision - B: Survey Updated Sept 2021
 Revision - A: Adjacent Elevations Added May 2019

HOOK SURVEY PARTNERSHIP
 Land & Building Surveyors
www.hooksurvey.com

Project:
 Hill House 67-71 Lowlands Road
 HARROW HA1 3EQ

Client:
 Motcomb Estates Limited

Drawing title:
 Floor Plans And Section

Job No.: S19/7034 Dwg No.: S19/7034/01 Revision: B
 Scale: 1:100 Date: Sept 2021 Drawn by: C.A.M.

Levels related to:
 Ordnance Survey (OSGB36) coordinate system and level data defined by Goid model OSTN15, based around 2 survey stations H1 & H2 with a scale factor of 1.00000

Head Office:
 Unit 1, Bylow Farm
 Orchard Way
 Dartford, Kent
 DA2 7ER
 Email: mail@hooksurvey.com
 Tel: +01322 277221

Midlands Office:
 54 Stafford Road
 Shipston on Stour
 Warwickshire
 CV38 4AZ
 Email: midlands@hooksurvey.com
 Tel: +01688 430346

www.hooksurvey.com

